



HGS (INDIA) LIMITED



HGS-5515 Male & Female (PUP) Screw Fit Connector



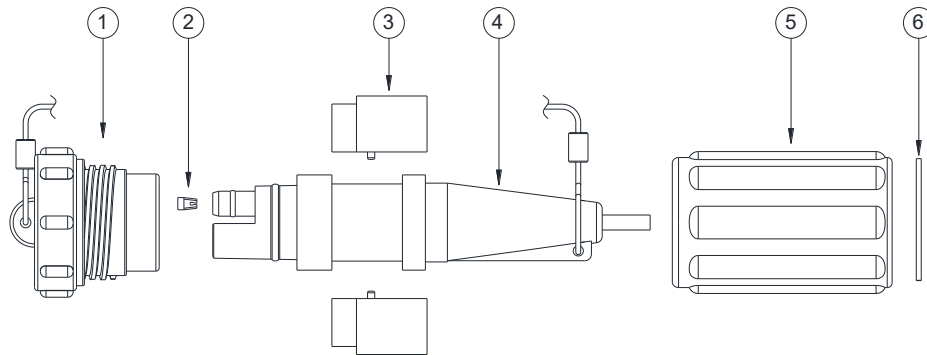


HGS (INDIA) LIMITED



SCHEMATIC

HGS-5515 Male (PUP) Screw Fit Connector



6	CIRCLIP	01No.
5	COUPLING RING	01No.
4	CONN. BODY SUB ASSY.	01No.
3	STOPPER	02Nos.
2	MIL MAX CONTACT #08	01No.
1	DUST CAP SUB ASSY. WITH INSU. WIRE ROPE & CRIMP SLEEVE	01No.
S. NO.	DESCRIPTION	QTY.

HGS 5515M (PUP)
SF Conn.





HGS (INDIA) LIMITED



SPECIFICATIONS

HGS-5515 Male (PUP) Screw Fit Connector

- Impact Resistant Material.
- Moulded on 4.57, 5.33 or 6.35 mm cable.
- Male end connector with coupling ring assures mating with its counterpart.
- Water proof for marsh environment.
- Gold plated pins & sockets assure positive electrical connections.
- Screw fit mating.
- Maximum strength in rugged field condition.
- Fitted with dust cap.
- Operating Temperature Range: -20°C to +70°C.
- Pressure Rating: Up to 3 bar.

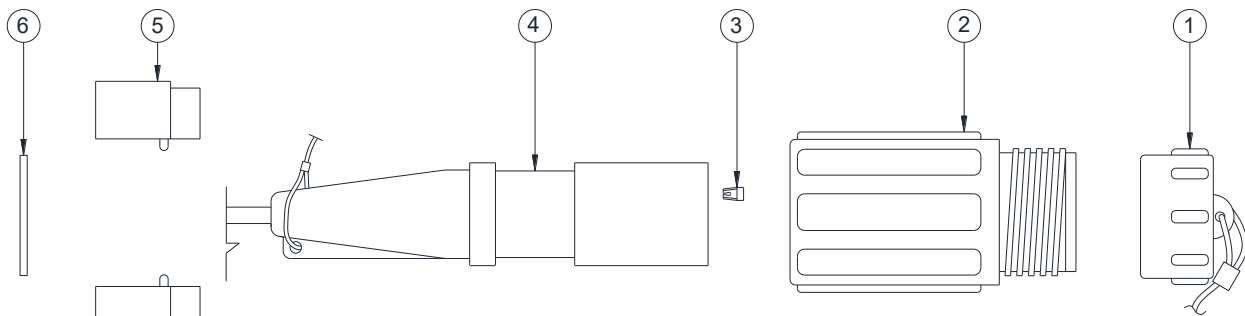


HGS (INDIA) LIMITED



SCHEMATIC

HGS-5515 Female (PUP) Screw Fit Connector



6	CIRCLIP	01No.
5	STOPPER	02Nos.
4	CONN. BODY SUB ASSY.	01No.
3	MIL MAX CONTACT #08	01No.
2	COUPLING RING	01No.
1	DUST CAP SUB ASSY. WITH INSU. WIRE ROPE & CRIMP SLEEVE	01No.
S. NO.	DESCRIPTION	QTY.

HGS 5515F (PUP)
SF Conn.





HGS (INDIA) LIMITED



SPECIFICATIONS

HGS-5515 Female (PUP) Screw Fit Connector

- Impact Resistant Material.
- Moulded on 4.57, 5.33 or 6.35 mm cable.
- Female end connector with thread assures mating with its counterpart's coupling ring.
- Water proof for marsh environment.
- Gold plated pins & sockets assure positive electrical connections.
- Screw fit mating.
- Maximum strength in rugged field condition.
- Fitted with dust cap.
- Operating Temperature Range: -20°C to +70°C.
- Pressure Rating: Up to 3 bar.

Version 1.2